



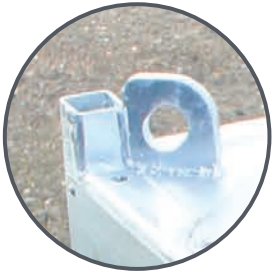
LUNO
SYSTEMS

LSS POD

LIFE SUPPORT SYSTEM



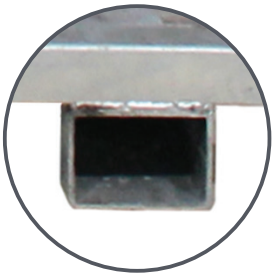
FEATURES



Lifting eyes



Fold-out desk area



Fork pockets



Storage compartment :
4 helmets, communications
and other ancillary
equipment



Control panel
compartment



4 Umbilical reels, each
for up to 100M

Designed with portability in mind, the LSS Pods function as fully self-contained, 'drop-off' units and can be manoeuvred using either a forklift or a crane

At the heart of the LSS Pod is the Airmaster 2, our state-of-the-art breathing apparatus control panel designed specifically for confined space and inert entry operations.

This cutting-edge system manages airline feeds for up to four users simultaneously, offering unparalleled control and safety. The system is supplied by a separate cylinder bank, ensuring a consistent and dependable air supply.

Each LSS Pod is equipped with four 100-metre reel drums featuring durable umbilical air hoses that integrate primary and secondary air supplies, as well as communication feeds, providing seamless connectivity. This ensures users have uninterrupted support and clear communication, even in challenging and hazardous environments.

SPECIFICATION

	LSS POD
Weight	280kg unladen
Size	2210mm H x 1350 mm W x 1025mm D
Transportation Method	Lifting eyes or fork pockets
Construction	Hot dip galvanised mild steel