

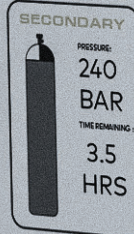
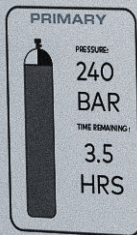


LUNO  
SYSTEMS

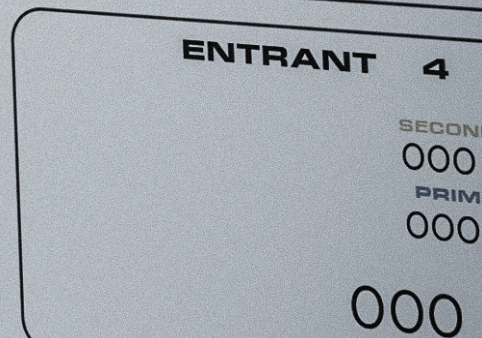
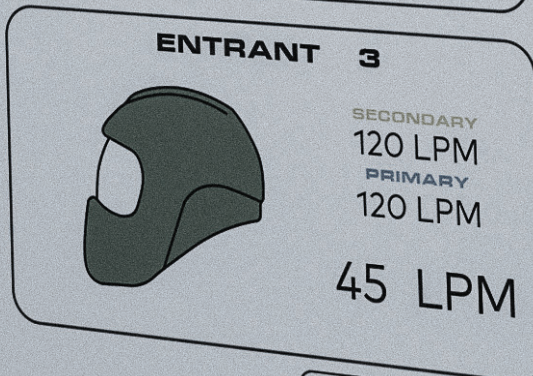
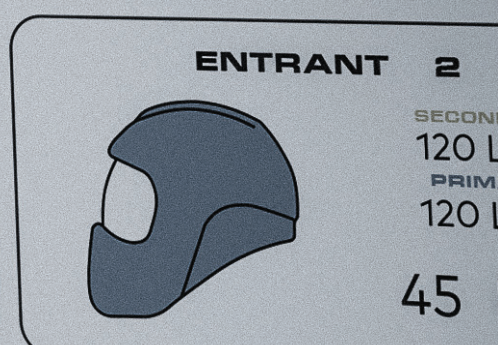
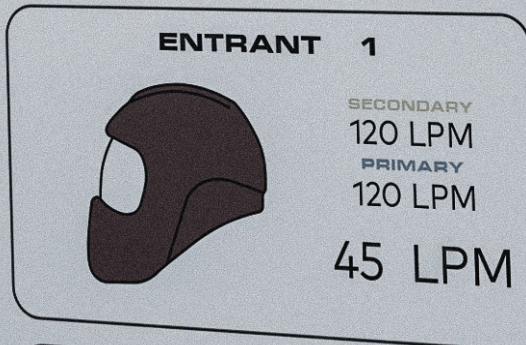
# ENTRY SENTRY™ LIFE SUPPORT SYSTEM



## AIR SOURCE



## ENTRANTS



Version 1.1

[www.lunosystems.com](http://www.lunosystems.com)

© COPYRIGHT LUNO SYSTEMS LTD





## Never before has control of high hazard working in atmospheres classed as IDLH been so effective.

Revolutionising work in inert entry work environments, the Entry Sentry LSS™ system is a combined and fully integrated system for management of critical information to keep entrants safe.

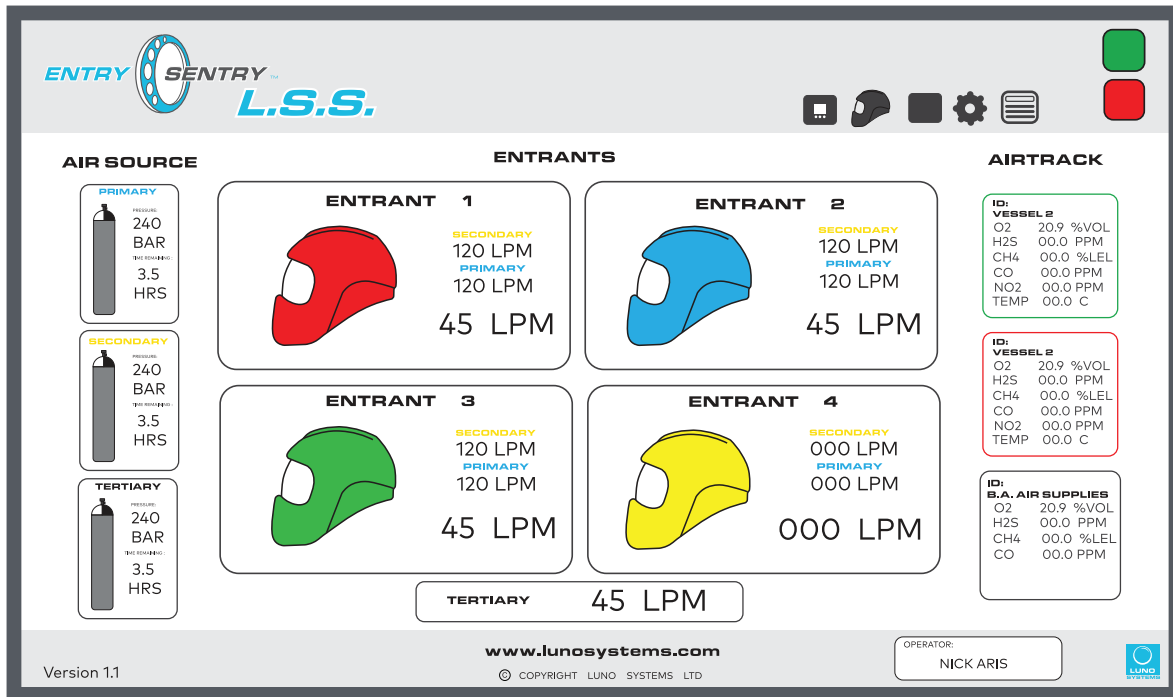
Whilst some attempts have been made to digitalise control systems high hazard working, none bring all the information into one comprehensive solution. The system acts as a back up to existing analogue/mechanical controls which are typically used on control panels, without replacing it which reduces nervousness often experienced with transitioning to a digital system entirely.

In addition to real time monitoring of critical data for the control panel operator, all data is logged and can be retrieved in the event of an incident. The system is compatible with most control panels within the Airmaster range and can be retrofitted to existing control panels to upgrade.

Giving an increased level of safety monitoring the system enhances contractor status with client organisations, providing a unique competitive advantage.

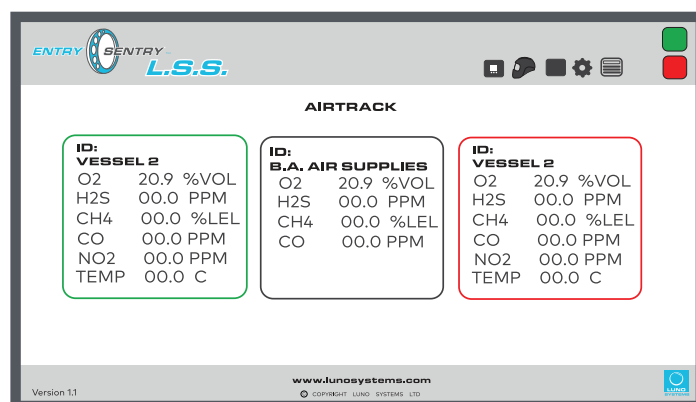


# FEATURES



## Key features the system will monitor are as follows:

- Entrant and Control Panel operator names and the project/client name
- LSS panel, high and reduced pressures
- LSS panel flowrates to each entrant
- Breathing rates for each entrant
- Gas detection inside the reactor vessel including Oxygen, Carbon Monoxide, Flammables, and Hydrogen Sulphide and temperature. (additional gases can also be detected – see Airtrack™ data sheet)
- Air quality monitoring of the air supplies to the entrants to EN12021 or Grade D standards
- CCTV video streaming for up to 4 cameras



## TYPICAL CONFIGURATION OPTIONS

SOFTWARE/HARDWARE	
20278	ENTRY SENTRY LSS™ SYSTEM SOFTWARE AND HARDWARE INCLUDING PC, MONITOR 42 INCH, CABLING
20279	HARDWARE FOR 4 MAN PANEL
20280	HARDWARE FOR 6 MAN PANEL

CCTV	
20281	CCTV MODULE WITH 4 CAMERAS

GAS DETECTION	
See AIRTRACK product sheet	